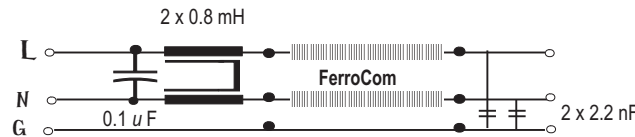
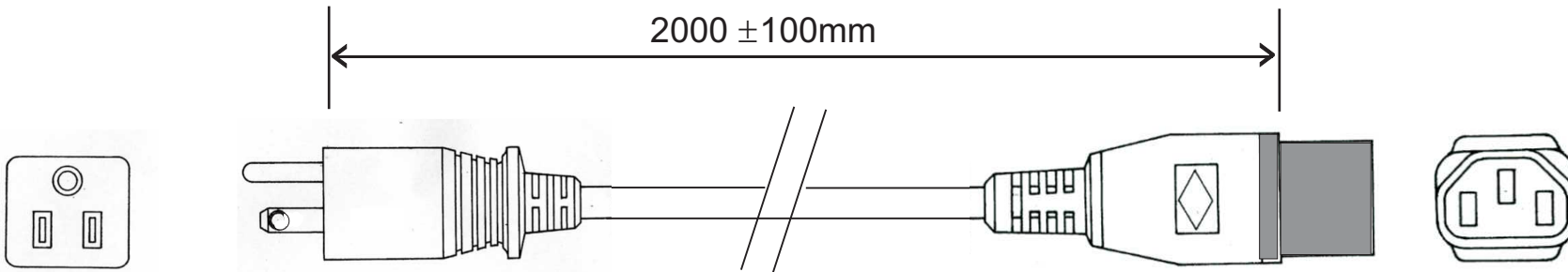
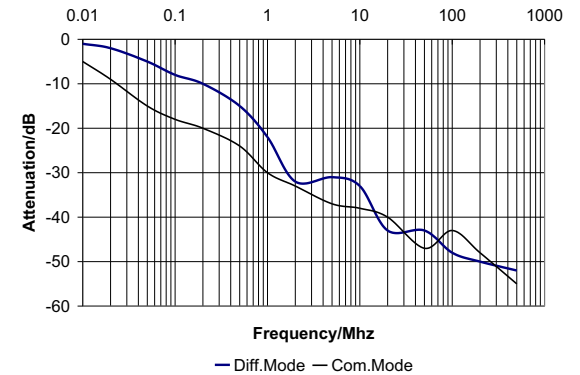


# EMC Cord NA 201

Rev	Date
1	6/15/05
2	7/22/05
3	7/16/09
4	7/9/10
5	8/7/17



Manufacturer P/N	Listed Cord (2)	Voltage	I A	L mH	C <sub>x</sub> uF	C <sub>y</sub> nF	U <sub>test</sub> P/N kV dc	U <sub>test</sub> P+N/Gnd kV dc	Max. Leakage Current 125V-60Hz mA
NA 201	3G1.0	125V, 50-60 Hz	10	0.8	0.1	2.2	2.1	2.1	2 x 0.2



## Construction

- 1 - Plug: 15 A, 125 V, 2 pole, 3 wire - plug according to UL 498 (Nema 5-15P) with built in X capacitor and common mode inductor.
- 2 - Cable:
  - Low-pass aluminum foil shielded cable H05 VV-F 3G1.0mm<sup>2</sup> with ferrite coated (FerroCom) line and neutral conductors (P&N) for high frequency performance.
  - Length - 2 meters, Flame test acc to UL VW-1 and VDE 0742, part 804.
  - Color light grey (RAL 7035) with longitudinal stripe.
- 3 - Cable end:
  - appliance coupler according to IEC 60320-C13 with inbuilt Y capacitors 2.2nF / 250V



**EMC Eupen**  
5033 Industrial Road., Bldg. 6  
Farmingdale, NJ 07727

732-919-1100 Tel 732-919-7196 Fax  
www.emceupen.com  
sales@emceupen.com

## Power Cord with Built In Filter Elements

**Drawing No.**  
**NA 201**

Style IMU 14

Drawn By MCL	Eng CK MK	QA CK PH
Date: 6/13/05	Date: 6/15/05	Date: 6/14/05
UL / CSA E207817 / E-301305		Approved Sig
Customer P/N: TBD		Sheet 1