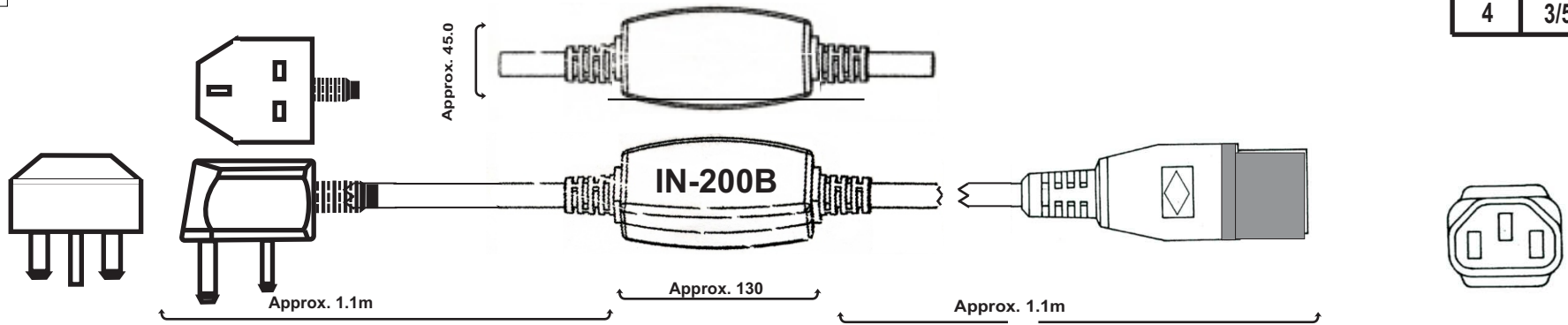
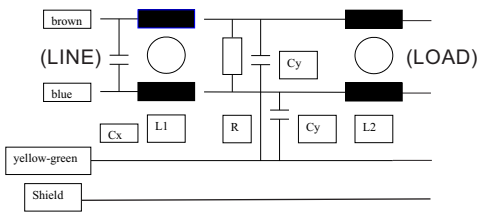
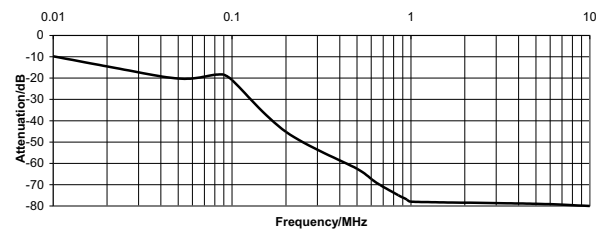


Rev	Date
1	08/14/08
2	9/30/16
3	3/22/17
4	3/5/18

# High Frequency In-Line Filter Cord IN-200B



Manufacturer P/N	Listed Cord (2)	Voltage	I A	L mH	C <sub>x</sub> uF	C <sub>y</sub> nF	R Meg Ω	U <sub>test</sub> P/N kV dc	U <sub>test</sub> P+N/Gnd kV ac	Max. Leakage Current 250V-50H mA
IN 200B	Shielded 3AWG18	250V, 50-60 Hz	10	2 x 0.8	0.1	2.2	1 (1/4w)	1200 V 2 mA 3 sec	2.1	2 x 0.3



Typical Attenuation

## Construction

- Cable:
  - Low-pass aluminum foil shielded cable H05 VV-F 3G1.0mm<sup>2</sup> with ferrite coated (FerroCom) line and neutral conductors (P&N) for high frequency performance.
  - Length - 2 meters, Flame test acc to UL VW-1 and VDE 0742, part 804.
  - Color light grey (RAL 7035) with longitudinal stripe.
- Cable end:
  - appliance coupler according to IEC 60320-C13
- Plug: According to BS1363/A rewirable plug-13A fuse built-in
- Housing - crush proof. Total resistance of the shield from cable end to cable end including housing is one ohm max.



**EMC Eupen**  
5033 Industrial Road., Bldg. 6  
Farmingdale, NJ 07727  
732-919-1100 Telephone  
732-919-7196 Fax  
sales@emceupen.com  
www.emceupen.com

## High Frequency Power Cord with In-Line Filter Elements

Drawing No.  
**IN-200B**

Drawn By MCL	Eng CK MK	QA CK PH
Date: 08/14/08	Date: 08/14/08	Date: 08/14/08
Approval:		WJW Approved Sig
Customer P/N: TBD		Sheet 1