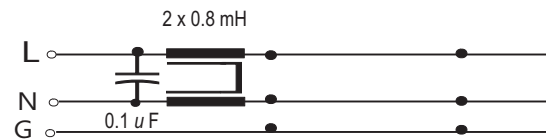
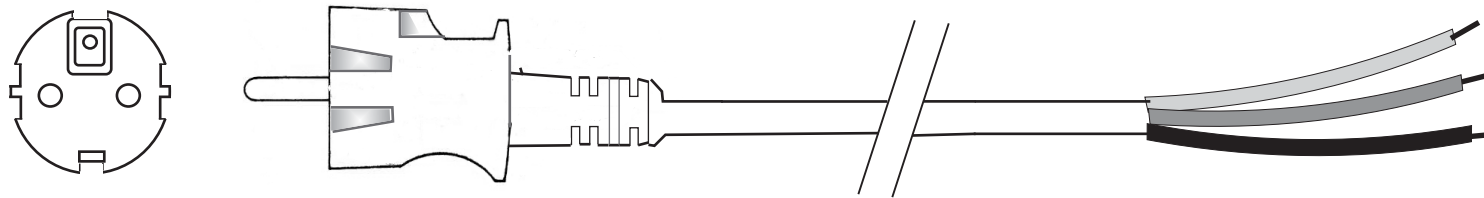
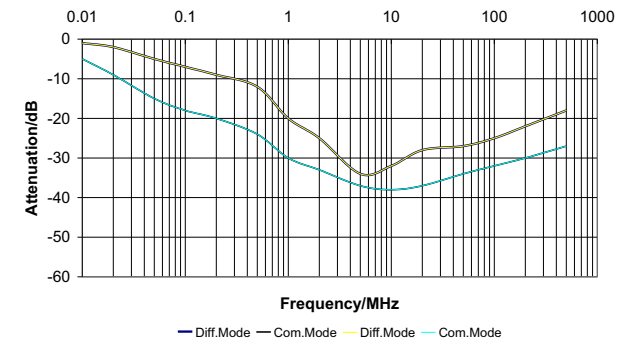


EMC Cord IMX 23 (ES 102)

Rev	Date
1	6/15/05
2	7/22/05
3	9/29/17
4	8/5/19



Manufacturer P/N	Listed Cord (2)	Voltage	I A	L mH	C _x uF	C _y nF	U _{test} P/N kV dc	U _{test} P+N/Gnd kV dc	Max. Leakage Current 250V-50Hz mA
IMX 23	Shielded 3G1.0	250V, 50 Hz	10	0.8	0.1	2.1	2.1	2.1	2 x 0.03



Construction

- 1 - Plug: According to CEE 7-VII with double protective conductor system VDE/UTE with built in X capacitor and common mode inductor.
- 2 - Cable:
 - Aluminum foil shielded cable SVT 3AWG18
 - Length 2 meters, flame test acc. to UL VW-1 and VDE 0742, part 804.
 - Color light grey (RAL 7035).
- 3 - Cable end:
 - Ready made ends



EMC Eupen

5033 Industrial Road., Bldg. 6
Farmingdale, NJ 07727

732-919-1100 Telephone
732-919-7196 Fax
sales@emceupen.com
www.emceupen.com

Power Cord with Built In Filter Elements

**Drawing No.
IMX 23**

Style ES 102

Drawn By MCL	Eng CK MK	QA CK PH
Date: 6/13/05	Date: 6/15/05	Date: 6/14/05
Approval: Declaration of Conformity		Approved Sig
Customer P/N: TBD		Sheet 1