
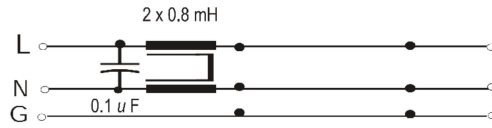
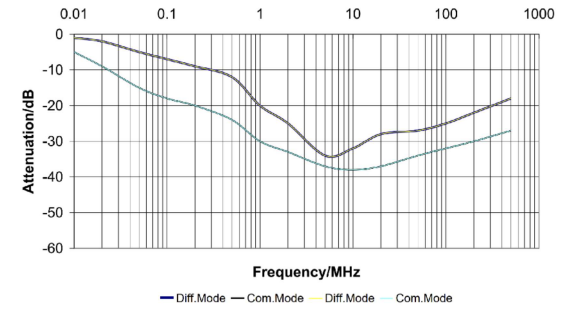


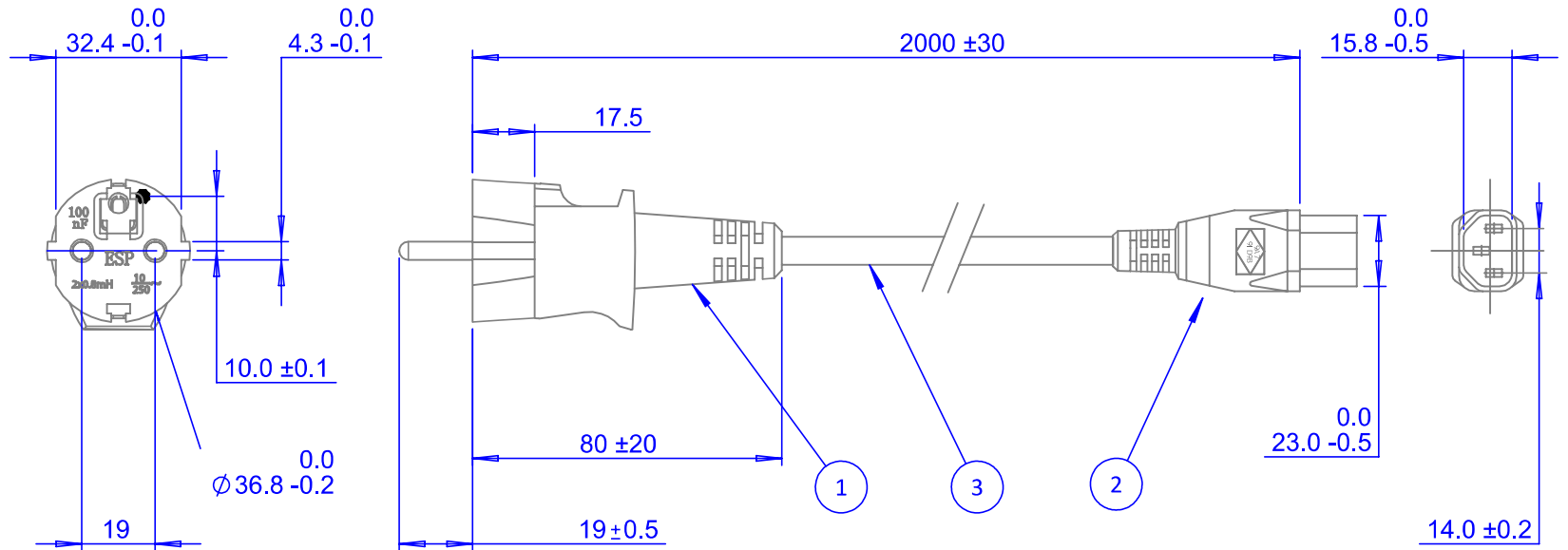
SPECIFICATION	
Listed cord (2)	Shielded 3G1.0
Voltage	250V, 50 Hz
I A	10
L mH	0.8
C _x μF	0.1
C _y nF	N/A
U _{test} P/N kV dc	2.1
U _{test} P+N/Gnd kV ac	2.1
Max. leakage Current 250V-50Hz mA	2x0.5
Certification	



CIRCUIT



TYPICAL ATTENUATION



CONSTRUCTION	
1. PLUG:	According to CEE 7-VII with double protective conductor system VDE/UTE with built in X capacitor and common mode inductor.
2. CABLE END:	Appliance coupler according to IEC 60320-C13.
3. CABLE:	Low-pass aluminum foil shielded cable SVT 3AWB18.
LENGTH:	2 meters.
COLOUR:	Light grey (RAL 7035).
FLAME TEST:	According to UL VW-1 and VDE 0742, part 804.



EMC Eupen
5033 Industrial Road., Bldg. 6
Farmingdale, NJ 07727
732-919-1100 Telephone
sales@emceupen.com
www.emceupen.com

Rev.	Date	Dwg no:	ES-100		
1	6/15/05	Style no:	IMX-03		
2	7/22/05	Desc:	EMC Power Cord with Built In Filter Elements		
3	11/10/22		Drawn:	LRA	11/10/22
		Checked:	WJW	12/13/22	
		Approved:	JWW	12/13/22	
Approval: Declaration of Conformity					
		Sheet: 1	Size: Letter	Units: mm	