
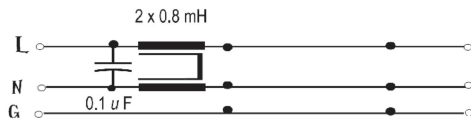
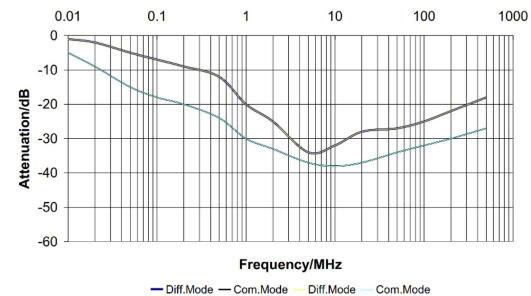


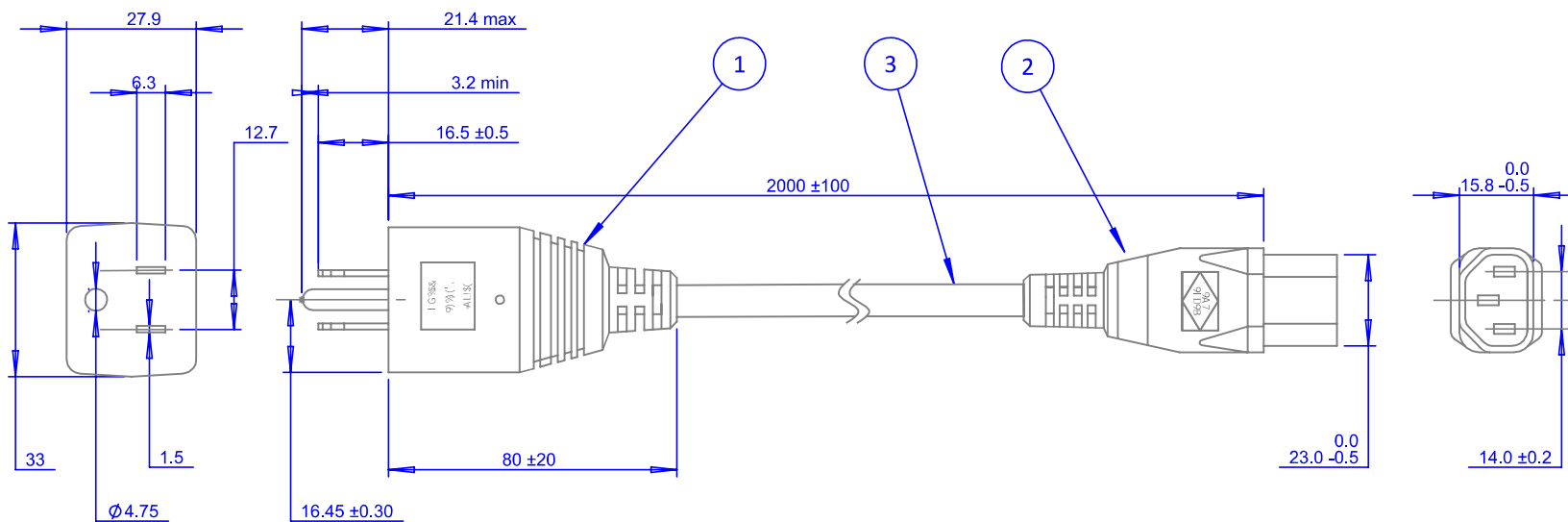
SPECIFICATION	
Listed cord (2)	Shielded 3AWG18
Voltage	125V, 50-60 Hz
I A	10
L mH	0.8
C _x μF	0.1
C _y nF	N/A
U _{test} P/N kV dc	2.1
U _{test} P+N/Gnd kV ac	2.1
Max. leakage Current 125V-60Hz mA	2x0.02
Certification	



CIRCUIT



TYPICAL ATTENUATION



CONSTRUCTION	
1. PLUG:	15 A, 125 V, 2 pole, 3 wire - plug according to UL 498 (Nema 5-15P) with built in X capacitor and common mode inductor.
2. CABLE END:	Appliance coupler according to IEC 60320-C13.
3. CABLE:	Aluminum foil shielded cable SVT 3AWG18.
LENGTH:	2 meters.
COLOUR:	Light grey (RAL 7035).
FLAME TEST:	According to UL VW-1 and VDE 0742, part 804.



EMC Eupen
5033 Industrial Road., Bldg. 6
Farmingdale, NJ 07727
732-919-1100 Telephone
sales@emceupen.com
www.emceupen.com

Rev.	Date	Dwg no: NA-100		
1	6/15/05	Style no: IMX-04		
2	7/22/05	Desc: EMC Power Cord with Built In Filter Elements		
3	7/16/09			
4	7/9/10			
5	8/7/17	Drawn:	LRA	11/2/22
6	11/2/22	Checked:	WJW	12/13/22
		Approved:	JWW	12/13/22
UL / CSA E207817 / E-192178				
		Sheet: 1	Size: Letter	Units: mm